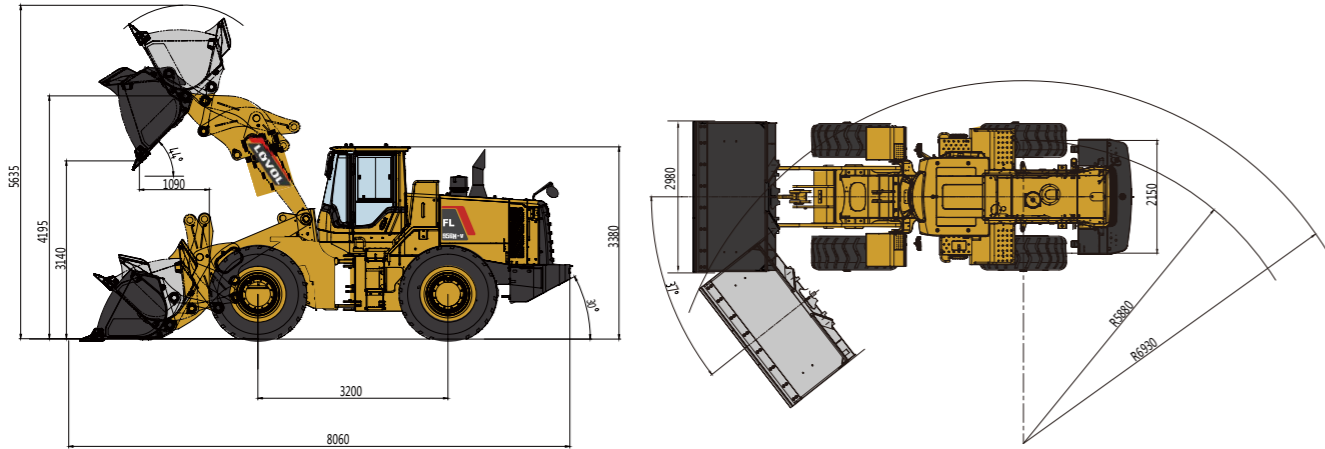


# FL956H-v Wheel Loader Specifications



## FL956H-v Dimensions



Item	Specifications
Rated Load	5000kg
Max. Traction Force	160kN
Max. Gradeability	30°
Max. Dump Clearance	3140mm
Dump Reach	1090mm
Wheel Tread	2150mm
Wheelbase	3200mm
Overall Dimension (L×W×H)	8060mm×2980mm×3380mm

Engine	
Emission Standard	Stage II
Number of Cylinder-Bore/Stroke	6-126°130
Max. Torque	980N·m
Rated Speed	2000rpm
Displacement	9.726L

Transmission System	
Torque Converter	Single stage two phase four element
Modulus of Converter	4.02
Transmission	Planetary powershift
Gear Shift	2 forward, 1 reverse
Max. Speed	42km/h

Front and Rear Axles	
Axles Type	Dry axles
Final Decelerate Type	Planetary reducer, spur cylindrical gear

Tyre	
Tyre Size	23.5-25
Ply	Front 18/Rear 16
Front Tyre Pressure	0.35-0.375MPa
Rear Tyre Pressure	0.28-0.30MPa

Steering System	
Type	Double pump flow confluence, flow amplifying hydraulic system
Steering Angle Each Direction	37°
Min. Turning Radius	6930mm

Hydraulic System	
Working Pressure	18MPa
Boom Lifting Time	5.7s
Total Cycle Time	10.6s

Brake System	
Service Brake	Air over hydraulic caliper disc brake
Park Brake	Air-cut brake

Service Refill Capacity	
Fuel Tank	280L
Hydraulic Tank	140L
Engine Oil	20L



## LOVOL CONSTRUCTION MACHINERY GROUP CO., LTD.

Address: No. 75, Huanghe East Road, Huangdao District, Qingdao City, Shandong Province, China.

Website: en.lovol.com

Alibaba: lovolconstruction.en.alibaba.com

Facebook: Cons Lovol

E-mail: lovol\_overseas@lovol.com

TEL: +86-532-86907190

As manufacturer, LOVOL has right to constantly upgrade and improve our products without informing to customers. The pictures in literatures are for reference only, the detailed specifications are subject to real products.

Engine Model  
Rated Power  
Operating Weight  
Bucket Capacity  
Max. Breakout Force

**WEICHAI WD10G220E23**  
**154kW**  
**16950kg**  
**3.0m³**  
**160kN**

**FL956H-v**  
WHEEL LOADER





## COST-EFFECTIVENESS

- Equipped with 3m<sup>3</sup> bucket, 3200mm optimized wheelbase central-articulation design is suitable for various applications.
- High-efficiency powertrain system is perfectly matched with hydraulic multi-stage power system that makes machine work fast and efficient to save energy.
- Adopt 18 ply front tire and 16 ply rear tire to extend service time.

## RELIABILITY

- The H series features many components which leverage product designs that have delivered reliable and durable machines.
- Adopt world class engine which provides excellent service and part availability in market.
- Optimized layout of pipelines and dual-seal technology can avoid oil leakage and make hydraulic system more reliable.

## ROBUSTNESS

- Reinforced center-articulated frame which has passed million times fatigue experimental test, 1,000 hours intensive experimental test and 5,000 hours jobsite test, it has been proved to be robust and durable.
- LOVOL Patented gearbox adopts reinforced overrunning clutch which could provide longer service time to the whole transmission system.
- The key components of axles are reinforced which could extend service time of whole axles and makes it more suitable for heavy-duty applications.

## COMFORT

- LOVOL ETX (European Technology Excellent) cab which adopts skeleton structure, has great vision, solid frame and lower noise features, these could provide a comfortable working environment for operator.
- High-back mechanical suspension seat with headrest could make operator feel more comfortable.

## 01 Engine



- Standard equipped with WEICHAI WD10G220E23 engine which is specialize for the heavy-dust working environment, it adopts three-stage air filter which can avoid early wear out of engine to extend service life. It also adopts multi-stage fuel filter which is suitable for various fuel to ensure the cleanliness of engine system. SHANGCHAI engine SC11CB220G2B1 is optional.

## 02 Transmission



- Transmission adopts LOVOL patented reinforced overrunning clutch, service life rises 30% with high reliability.
- Key bearings and seals adopt imported premium parts which have higher reliability.

## 03 Axles



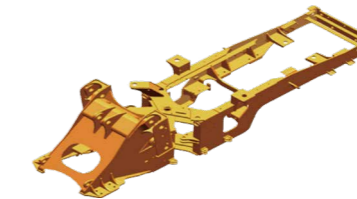
- Axle housing is optimized design through increasing the cross-section, the brace bearing of wheel hub is also reinforced, that make front axles capacity reaches 40T.
- Main reducer and wheel hub are reinforced, the service lives rise 30%.

## 04 Cab



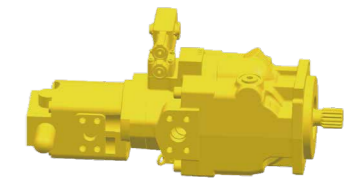
- Integrated closed skeleton structure cab which has great vision, equipped with air conditioning and high-back mechanical suspension seat, that makes operator more comfortable.
- The cab has micro pressurizing air system that makes the environment cleaner and more comfortable.

## 05 Frame and Articulation



- New reinforced front and rear frames with patented composite articulated structure went through million times fatigue experimental test, 1,000 hours intensive experimental test and 5,000 hours jobsite test, reach super strong payload capacity.

## 06 Hydraulic System



- LOVOL patent flow amplification system makes steering system more light, stable and precise, reaches the optimized balance between the heavy loading and flexibility, saving 3%-5% energy.
- Hydraulic oil filter's filtration ratio is 200 (means 99.5% impurities could be filtered out), that makes hydraulic system cleaner and more reliable.

## Attachments



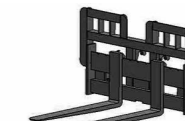
Larger Bucket



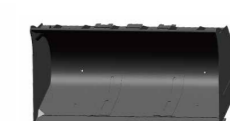
Log Grapple



Rock Bucket



Pallet Fork



Coal Bucket



Grass Grapple